

Smart Volume Measurement Solution

Luminwave TOF Camera

■ Solution Overview

In logistics transportation, volume measurement of cargos is a key to improve transportation efficiency and ensure safety. Different package shapes and sizes, which lead to a low space utilization can lead to high transportation costs. Frequent measurement is time-consuming and labor-intensive with human related errors; in addition, without an effective real-time monitoring during the loading and unloading process, it may easily lead to the risk of cargo loss or damage.

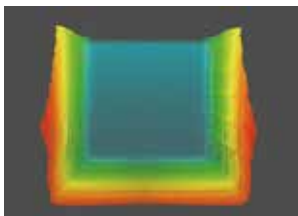
Luminwave's D series TOF camera comes with advanced AI measurement algorithms, which can monitor the cargo space and accurately build the 3D model of the space in a simple click. The Real-time and high-precision measurement of the cargo volume ensures reasonable utilization of cargo space and improves the loading efficiency of the cargo. The real-time monitoring of cargo status ensures transportation safety and reduces the costs.



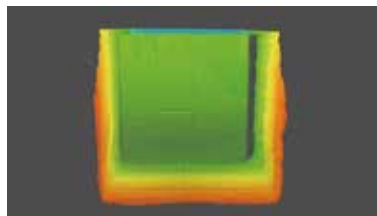
■ Program Effect

- Automated Calibration** | Obtain the baseline volume information of the compartments with one click
- Multi-compartment Compatibility** | Support multiple types of compartments, and cargo volume detection; flexible adjustment and allocation of the sensor and computation power
- Multi-scenario Application** | Software, hardware, multiple trigger methods and multiple working modes switches, adapting to various scenarios
- Accurate Volume Measurement** | Real-time, high-precision volume measurement data to optimize cargo space utilization
- 3D Visualization** | 3D visualization monitoring of package stacking status, no interference with the loading and unloading
- Multiple Noise Reduction Algorithms** | Support HDR, automatic exposure time, noise reduction filters, wrong data and distortion correction
- AI Volume Calculation Algorithm** | Volume error <5%, support customized algorithm integration and transplantation

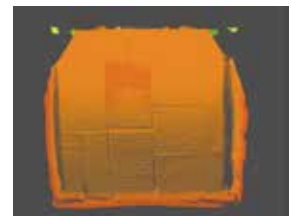
■ Actual Effect



0% Loading



43% Loading



70% Loading

■ Recommendation

D-Series TOF Camera D3, D-Series TOF Camera D1

Hangzhou LuminWave Technology Co., Ltd

HEADQUATER | 12/F, Block B, INVENTR Building, No. 459 Jianghong Road, Binjiang District, Hangzhou, Zhejiang, China

USA Office | 692 W Foothill Blvd Monrovia, CA, USA, 91016

✉ sales@luminwave.com

☎ +86 0571 8519 3787

☎ +86 19157800366

🏠 www.luminwave.com